

## SPECIFICATIONS

**ARTICLE**

Designation : **Plastic shower gun**

Code bobet :

**10462 : D. 15 white**

**10464 : D. 15 blue**

**10463 : D. 19 white**

**10465 : D. 19 blue**

Selling Unit : **Unit**

**CHARACTERISTICS**

Water saving shower gun

- POM body (polyoxymethylene: thermoplastic material), stainless steel rod and screws
- Intermittent control of water with locking system for continuous jet
- Colours : blue or white
- Temperature resistance : 85°C max. But from 60 ° C : maximum pressure of 4 bars
- Weight (without coupling part): 410 gr
- Delivered with a hose coupling diameter 15 or 19

Nominal operating pressure and nominal flow for the plastic shower gun diameter 19 (code Bobet 10465 or 10463) :

- Pressure

0.7 bars : 0.8 m3 per hour

3.5 bars : 2.1 m3 per hour

7 bars : 2.5 m3 per hour

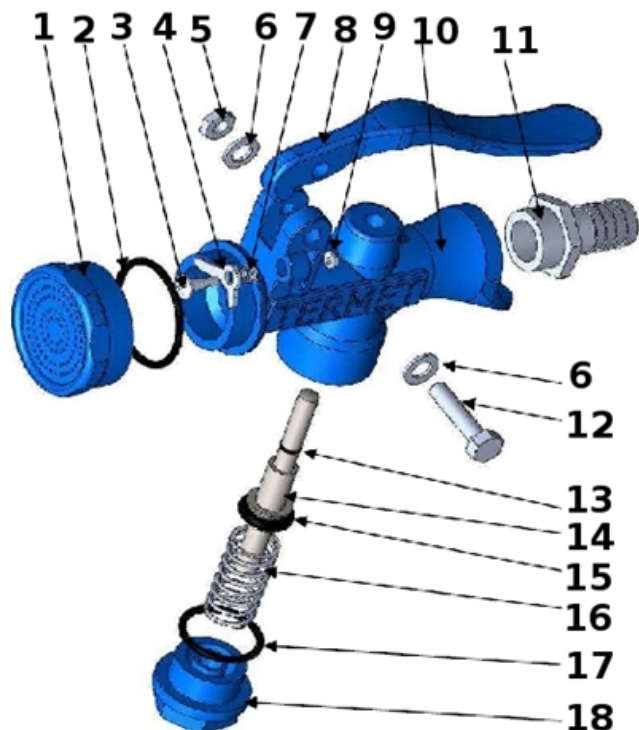
10 bars : 4.8 m3 per hour

**APPLICATION :**

- To clean carcasses, floors...

**STANDARDS :**

All materials in the composition of these shower guns are inert and can not be dangerous for human or animal health.



Rep	Désignation	Code
1	Embout blanc	369
	Embout bleu	
2	Joint d'embout	370
3	Vis de taquet	
4	Taquet	
5	Ecrou de poignée	
6	Rondelle de poignée	
7	Ressort de taquet	
8	Poignée blanche	380
	Poignée bleue	
9	Ecrou de taquet	

Rep	Désignation	Code
10	Corps blanc	9531
	Corps bleu	
11	Embout cannelé D.15	378
	Embout cannelé D.19	377
12	Vis de poignée	
13	Petit joint de piston	379
14	Piston	374
15	Joint de piston	375
16	Ressort de piston	373
17	Joint de bouchon	371
18	Bouchon blanc	372
	Bouchon bleu	