

# SPECIFICATIONS

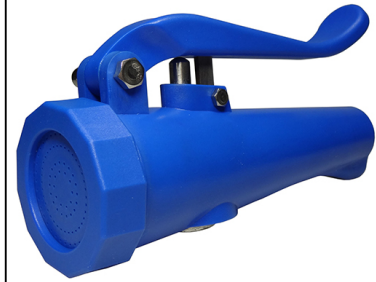
**ARTICLE**

Designation : **Narrow plastic washing nozzle**

Code bobet : **17840**

Selling Unit : **Unit**

*Non-contractual pictures*

**CHARACTERISTICS**

- Ergonomically shaped light washing nozzle
- High resistant plastic body
- Stainless steel internal valve
- EPDM seals certified KTW/DVGW/W270 for drinkable water
- Removable brass fluted coupling D.19

**DESCRIPTION :**

- Material : PA66
- Maximum pressure : 8 bars
- Maximum temperature : 60°C
- Weight : 0.19 kg
- Coupling : 1/2" female

**APPLICATION :**

- To rinse vegetables, fish, worktops... in food industry. Also used for all rinsing applications in kitchens.